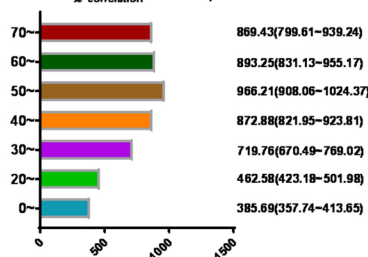


Obesity

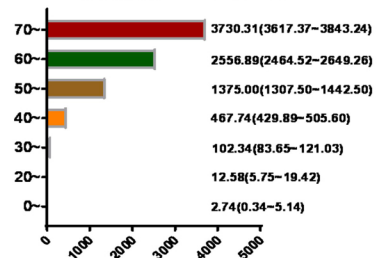
χ^2 correlation=27218.03, P<0.01



Prevalences and its 95% confidence interval (per 10,000 population)

Hypertension

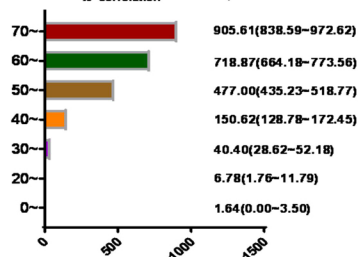
χ^2 correlation=10287.31, P<0.01



Prevalences and its 95% confidence interval (per 10,000 population)

Diabetes mellitus

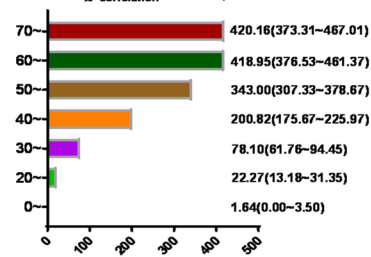
χ^2 correlation=2445.50, P<0.01



Prevalences and its 95% confidence interval (per 10,000 population)

Lumbar disc disease

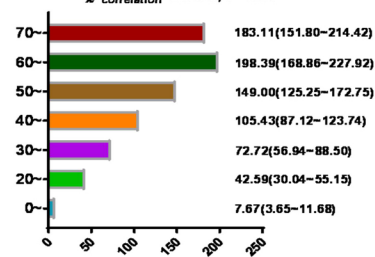
χ^2 correlation=1105.32, P<0.01



Prevalences and its 95% confidence interval (per 10,000 population)

Chronic gastritis

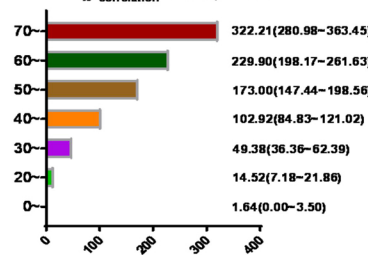
χ^2 correlation=366.29, P<0.01



Prevalences and its 95% confidence interval (per 10,000 population)

Digestive tract stones

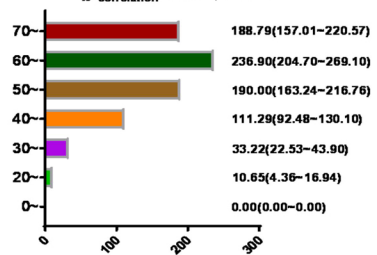
χ^2 correlation=718.46, P<0.01



Prevalences and its 95% confidence interval (per 10,000 population)

Cervical disc disease

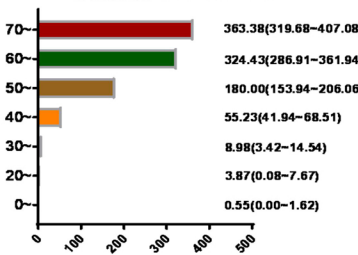
χ^2 correlation=567.26, P<0.01



Prevalences and its 95% confidence interval (per 10,000 population)

Bone hyperplasia

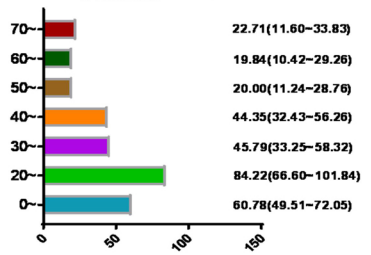
χ^2 correlation=1018.32, P<0.01



Prevalences and its 95% confidence interval (per 10,000 population)

Myopia

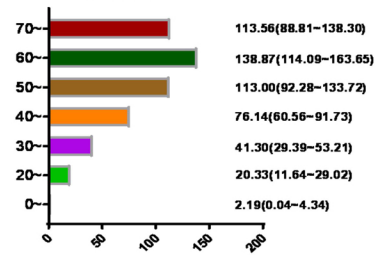
χ^2 correlation=50.22, P<0.01



Prevalences and its 95% confidence interval (per 10,000 population)

Urinary calculi

χ^2 correlation=277.69, P<0.01



Prevalences and its 95% confidence interval (per 10,000 population)