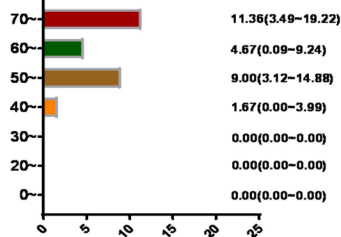


Lung cancer

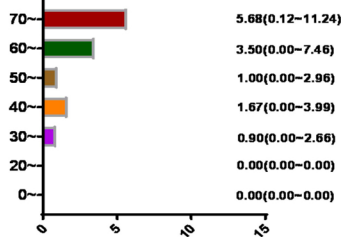
χ^2 correlation=27.36, P<0.01



Prevalences and its 95% confidence interval (per 10,000 population)

Gastric cancer

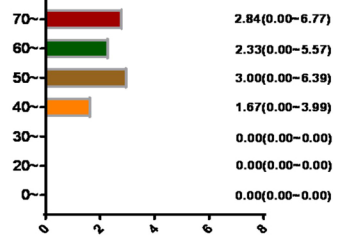
χ^2 correlation=11.61, P<0.01



Prevalences and its 95% confidence interval (per 10,000 population)

Liver cancer

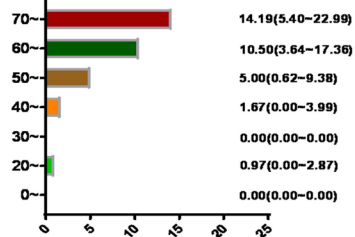
χ^2 correlation=8.02, P=0.01



Prevalences and its 95% confidence interval (per 10,000 population)

Rectal cancer

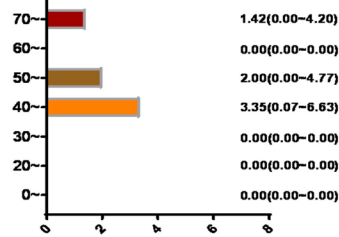
χ^2 correlation=34.90, P<0.01



Prevalences and its 95% confidence interval (per 10,000 population)

Thyroid cancer

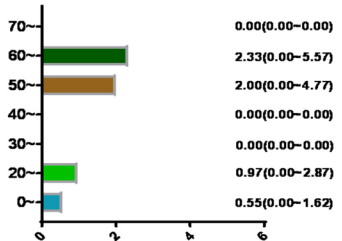
χ^2 correlation=2.75, P=0.10



Prevalences and its 95% confidence interval (per 10,000 population)

Leukemia

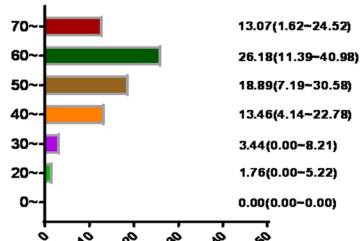
χ^2 correlation=0.61, P=0.44



Prevalences and its 95% confidence interval (per 10,000 population)

Breast cancer

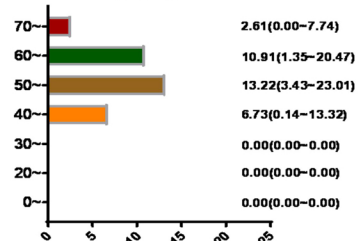
χ^2 correlation=24.49, P<0.01



Prevalences and its 95% confidence interval (per 10,000 population)

Cervical cancer

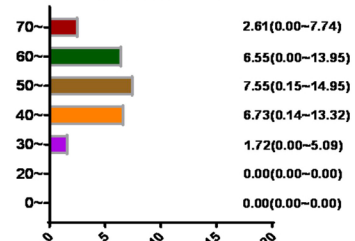
χ^2 correlation=10.86, P<0.01



Prevalences and its 95% confidence interval (per 10,000 population)

Endometrial cancer

χ^2 correlation=6.16, P=0.01



Prevalences and its 95% confidence interval (per 10,000 population)